
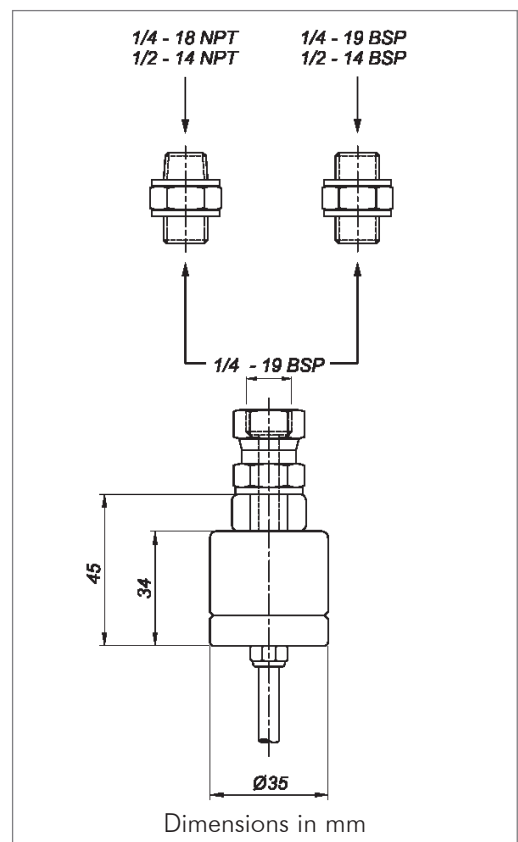


CH100



- Pressure sensor model CH-100, suitable to control the load in the hydraulic elevators. It's simple and economical, can be connected to any unit control of the series VK.
- Measure range of 0 to 100 bar.
- Calibrated in the factory. If connected to the unit control VK, there is no need to use any well-known weight in the moment of installation.

CONNECTION	
Standard	Excitation +Red
	Excitation -Black
	Signal +Green
	Signal -White
USB	



Technical Characteristic	
Full scale	100 bar
Non linearity	<0.5 % F.S.
Power supply	5..10 V
Hysteresis	<0.1 % F.S.
Combined error	<0.2 % F.S.
Insulation resistance....(V. Test =100V)	>5.000x10 ⁶ Ω
Maximum work load	150 % F.S.
Load limit without lost of characteristics	200 % F.S.