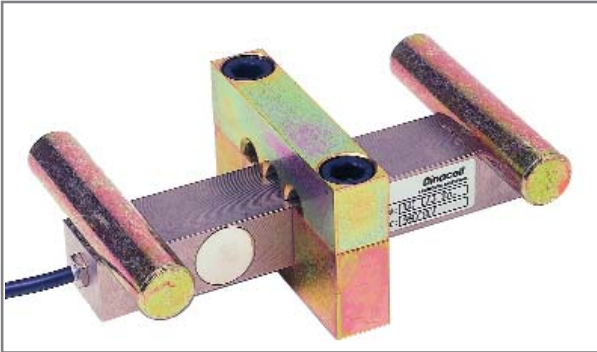
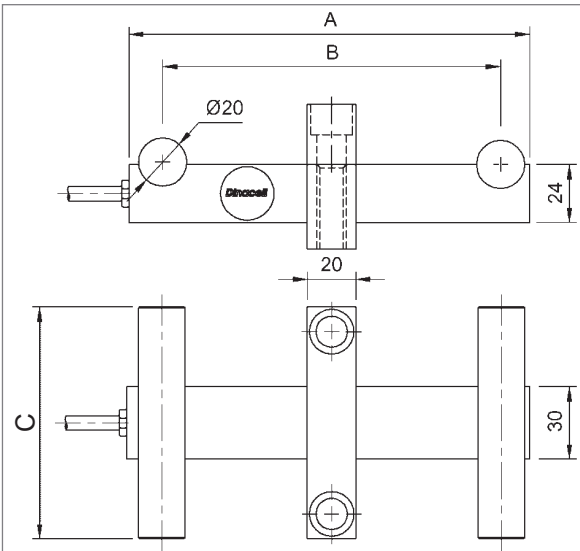


LCA



- Load cell for installation in cables.
- This cell is manufactured with a high quality aluminum material in different capacities from 4.000 kg to 6.000 kg.
- The design has been optimized to obtain a maximum sensibility and in this way to get a minimum deviation in the trajectory of the cables.
- "Auto-calibrated" No need to introduce a well-known weight.
- For the installation it needs the accessory "Comprise clamp LCA".
- It is a model with a great precision and easy assembly, it is suitable for elevators and freight elevators already installed.



Capacities	Measures (mm)	
	A	B
4.000 kg	166	140
6.000 kg	180	156

C (mm)	Number of cables	Diameters of cables
96	3 and 4	
126	5 and 6	8-9-10-11-12-13
156	7 and 8	


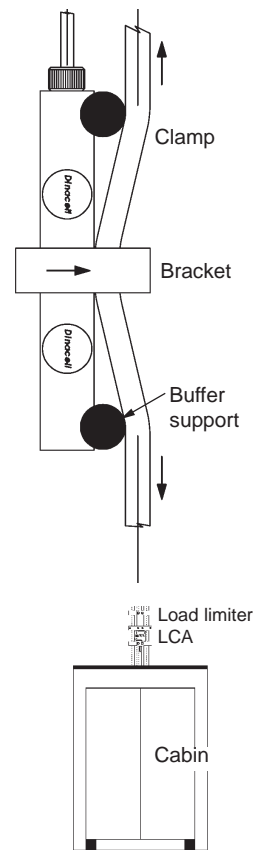
CONNECTION	
Standard	Excitation +Red
	Excitation -Black
	Signal +Green
	Signal -White
USB	

Diagram of installation

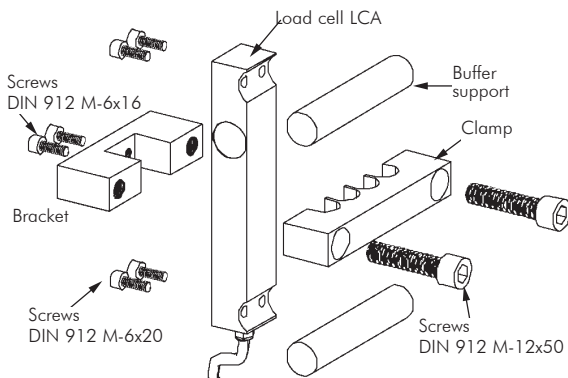


Comprise clamp LCA

Asides from the standard, we manufactured other measures according to the clients request.

Note

To carry out your orders, it is necessary to specify the numbers and the diameter of cables.



Technical Characteristic

Tension of excitement	5..12V
Non linearity	<0.15 % F.S.
Non repeatability	<0.15 % F.S.
Hysteresis	<0.05 % F.S.
Combined error	<0.2 % F.S.
Input resistance	350 Ω ± 2
Output resistance	350 Ω ± 2
Insulation resistance... (V. Test =100V)	>5.000x10 ⁶ Ω
Maximum work load	150 % F.S.
Load limit without lost of characteristic	200 % F.S.