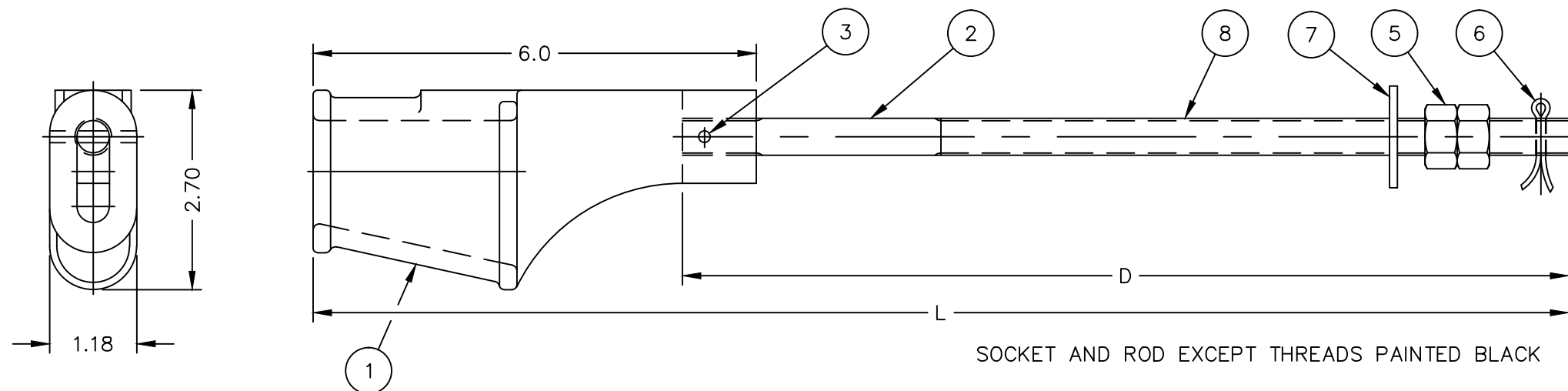
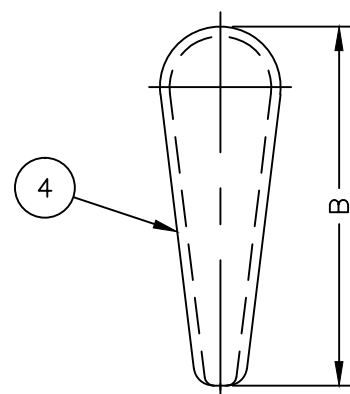


EM100AB

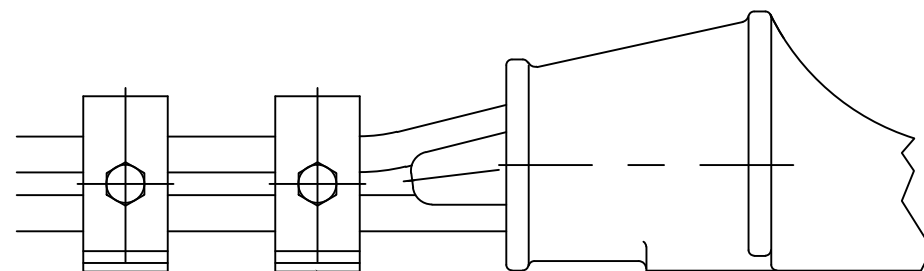
No.	LTR	REVISION/DESCRIPTION	DATE	CHECKED BY



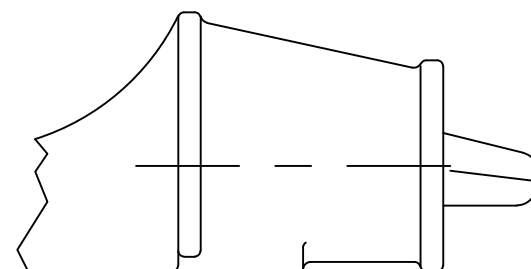
PER ASME A17.1 SECTION 2.20  
WIRE ROPE WEDGE SOCKET ASSEMBLY



P/N: EM101  
WEDGE



EM103 WIRE ROPE RETAINING CLIPS  
(2) REQUIRED



REF	DESCRIPTION
1	SOCKET
2	ROD
3	ROLL PIN
4	WEDGE
5	NUT
6	COTTER PIN
7	WASHER
8	THREADS

This drawing is the property of ELEVATOR MOTORS CORPORATION  
Do not print, photograph, copy or use for any  
purpose other than that which it is specifically furnished



3/8"-10mm EMCO-100  
WIRE ROPE WEDGE SOCKET ASSEMBLY

R.S.P.	---	07/AUG/01	1" = 2"	1 of 1
DRAWN BY	CHECKED BY	DATE	SCALE	SHEET No.

DWG. No.	EM100AB	C
		REV LTR.

EM100AB

DATE	PART	DESCRIPTION	B	L	D
05/MAY/01	EM101	3/8 INCH-10mm WEDGE INSERT	3.74	-	-
	EM100-12	WIRE ROPE WEDGE		17.0 INCH	12.0 INCH
	EM100-18	SOCKET		23.0 INCH	18.0 INCH
	EM100-24			29.0 INCH	24.0 INCH