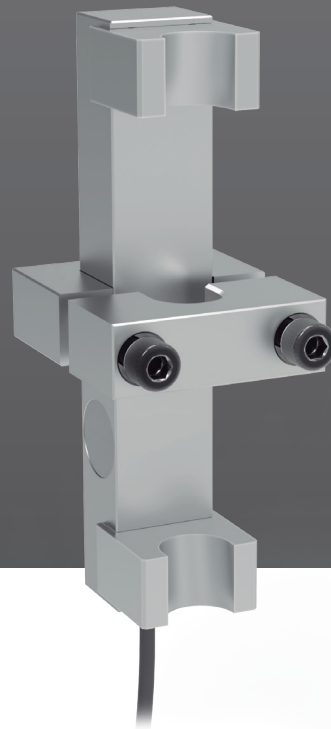


Rope weighing-oriented load cells



LCA2 Load cell for on ropes

The LCA2 are load cells that are installed in elevator ropes or cranes to measure the individual supported load on each rope. In order to cover installations with different rope diameters, each LCA2 can be equipped with different types of clamps.

These cells have an optional cable output either with wire connection or USB , depending on the type of input of the limiting equipment.

For a complete installation

In installations that require more than one sensor to be connected to a load limiter with a single input channel, all signals must be joined into one. It is possible to purchase this type of sensors as a set, attached to a (1) CONNECTION BOX with either cable wiring output or with USB.

On the other hand, it is also possible to purchase LCA2 individually with USB output. In this case the sensors must be connected to an (2) INTERFACE that also offers the possibility of either cable wiring output or USB (depending on the type of input of the limiting equipment).



(1) CONNECTION BOX

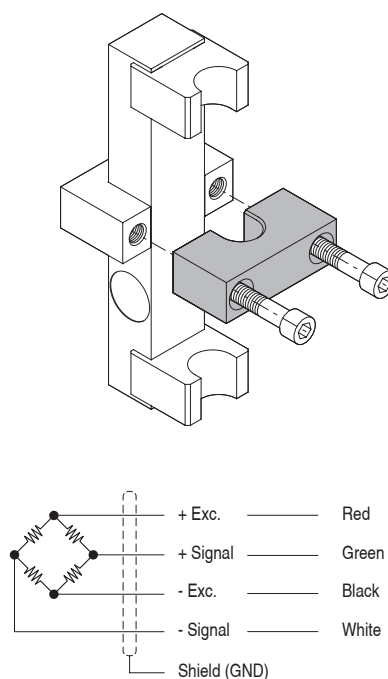
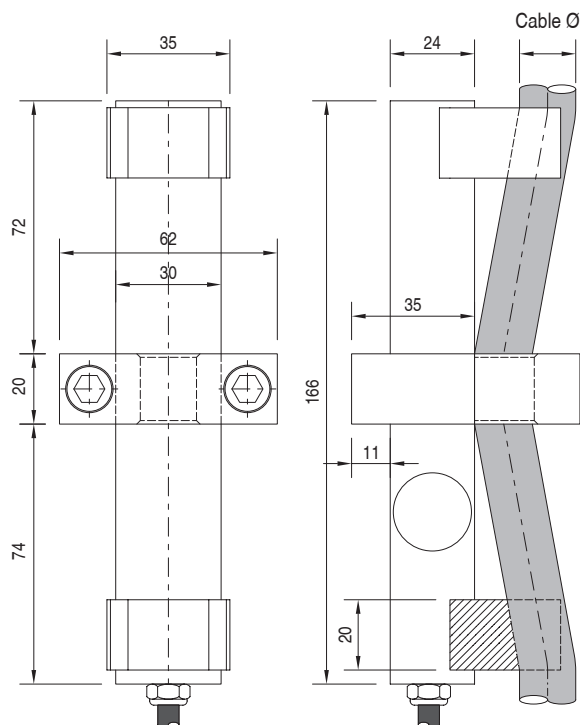


(2) INTERFACE

Specifications

Parameter	Units	Specifications	
Model	-	LCA2	
Nominal Load (N.L.)	kg	1600 / 3000	
Ø Compatible rope	mm	18 ... 22	
Nominal Sensibility (N.S.)	mV/V	1.4 ... 2.0	
Accuracy	-	0.25%	
Zero balance	%N.S.	10	
Maximum excitation voltage	V	12	
Maximum linearity error	%N.S.	0.11	
Temperature range	Compensated	-10 ... +40 (+14 ... +104)	
	Operating	-20 ... +60 (-4 ... +140)	
	Storage	-20 ... +70 (-4 ... +158)	
Min. Insulation resistance (V.Test s 100V)	GΩ	4	
Input resistance	Ω	350 ... 380	
Output resistance	Ω	350 ± 2	
Load limit	Safe	%N.L.	150
	Without characteristics loss	%N.L.	200
Cable	Type	-	4 x 0.09 mm ² Ø4.3
	Connector	-	Wiring connection USB
	Standard length	m	2
	Material	-	Polyurethane (PU)
Sensor	Material	-	Aluminum
	Surface treatment	-	Anodized
Protection class	-	-	IP65

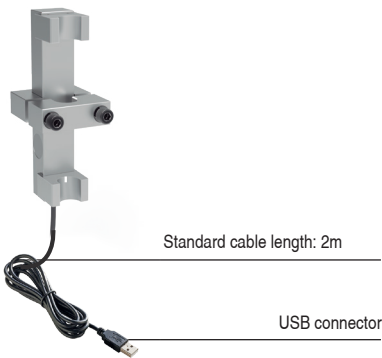
Dimensional drawings (mm) and wiring diagram



LCA2 Data Sheet

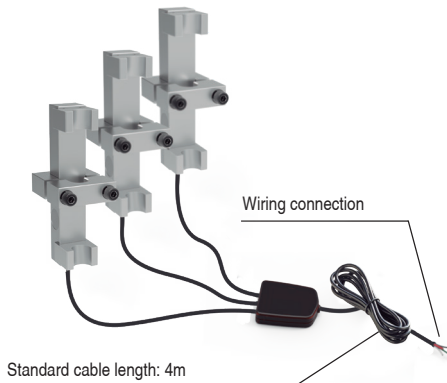


Ref. individual



Ref.	Ø Rope	N.L. (kg)	Model
017206	Ø18	1600	LCA2
007032	Ø19		
012225	Ø20		
020153	Ø21		
007356	Ø22		
008545	Ø18	3000	
007351	Ø19		
020154	Ø20		
008544	Ø21		
007357	Ø22		

Ref. Set



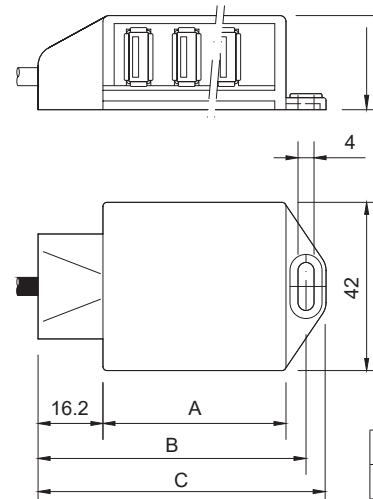
Ref.	No. Cells	Ø Rope	N.L. (kg)	Model
009246	2	Ø18	1600	LCA2
009247	3			
009248	4			
019896	2	Ø19		
010729	3			
017109	4			
-	2	Ø18	3000	
010558	3			
010211	4			
-	2	Ø19		
010728	3			
012037	4			

For customizations turn to the sales department.

Accessory: INTERFACE



Parameter	Units	Specifications			
Model	-	INTERFACE			
Temp range.	°C (°F)	-20 ... +60 (-4 ... +140)			
Casing material	-	Fireproof plastic ABS			
Protection class	-	IP50			
Cable type	-	4 x 0.22 mm ² Ø4			
Standard length	m	5 + Ferrite			
USB Input	-	6		12	
Cable Output	-	USB	Wiring connection	USB	Wiring connection
Ref.		007555	007274	007554	007275



Dimensions in mm

USB	A	B	C
6	48	69	74
12	84	105	110

For more information

www.elevatormotors.com

ELEVATOR MOTOR CORPORATION. (EMCO)
 80 Carolyn Boulevard,
 NY- 11735 Farmingdale, USA
 Phone. (+1) 6312934440
 Fax. (+1) 6312932714



Document Ref.: D1749-02
 Publication date: 03/05/2022

OFFICIAL USA DISTRIBUTOR OF DINACELL ELECTRÓNICA S.L.

Dinacell Electrónica S.L. reserves the right to add, modify and/or delete content of the document without prior notice. The content indicated here should be used as general product information. It should not be interpreted as a guarantee of quality or durability.