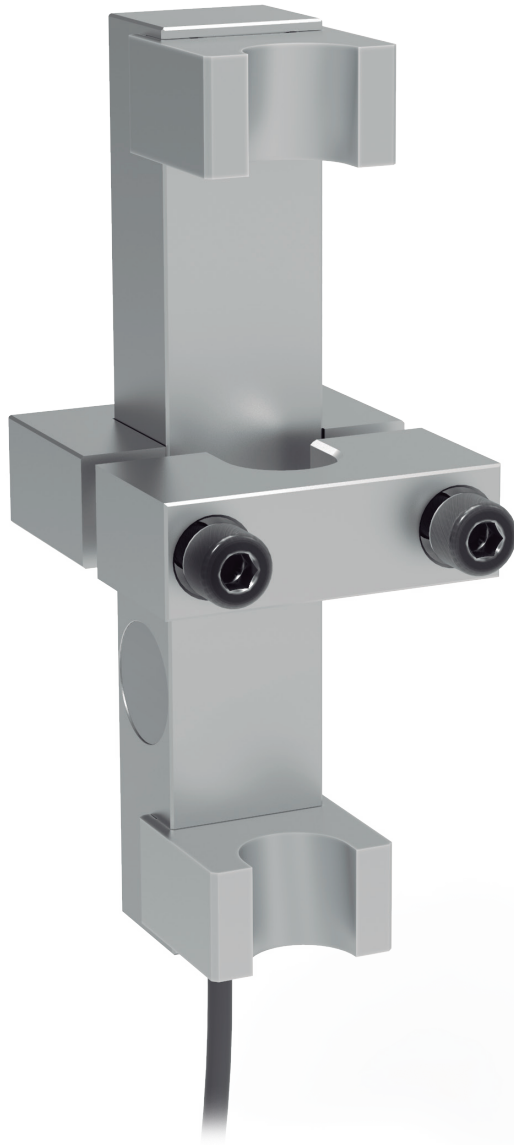


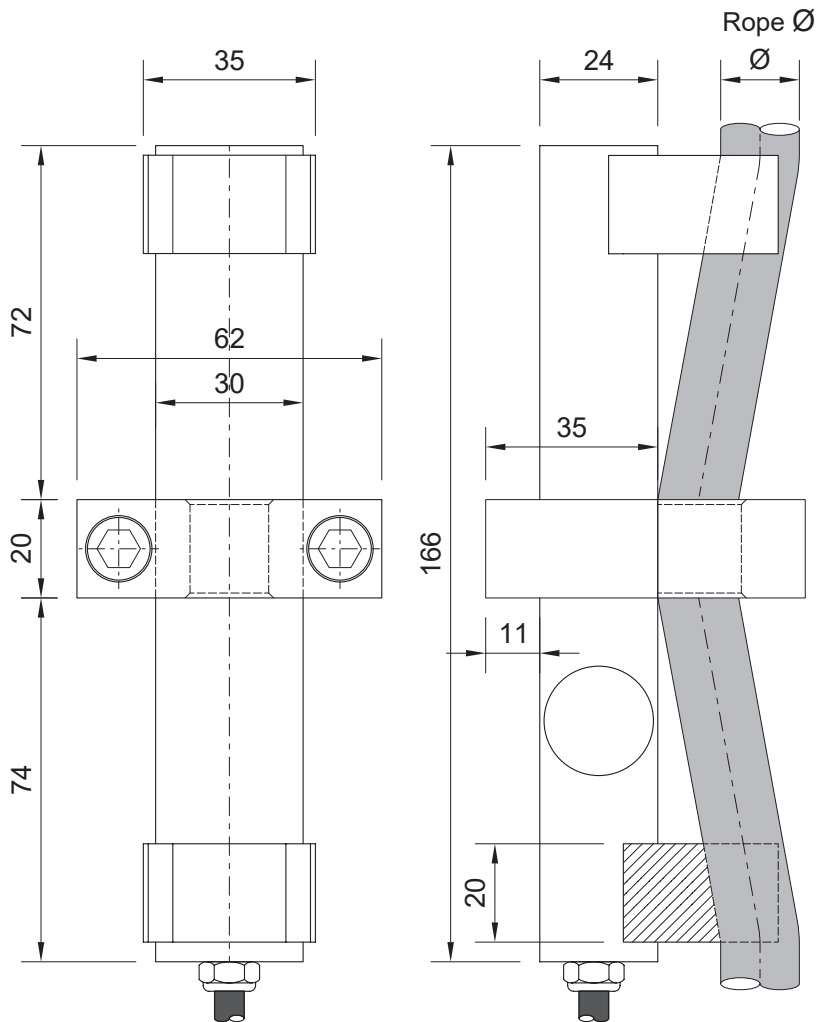
# LCA2

## Installation guide

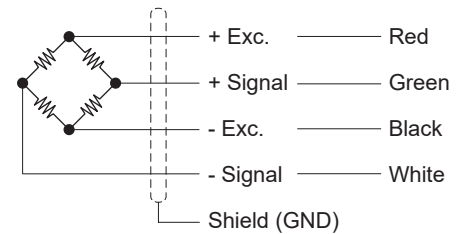


Dinacell Electrónica S.L.

## 2.1 Dimensions and connection types



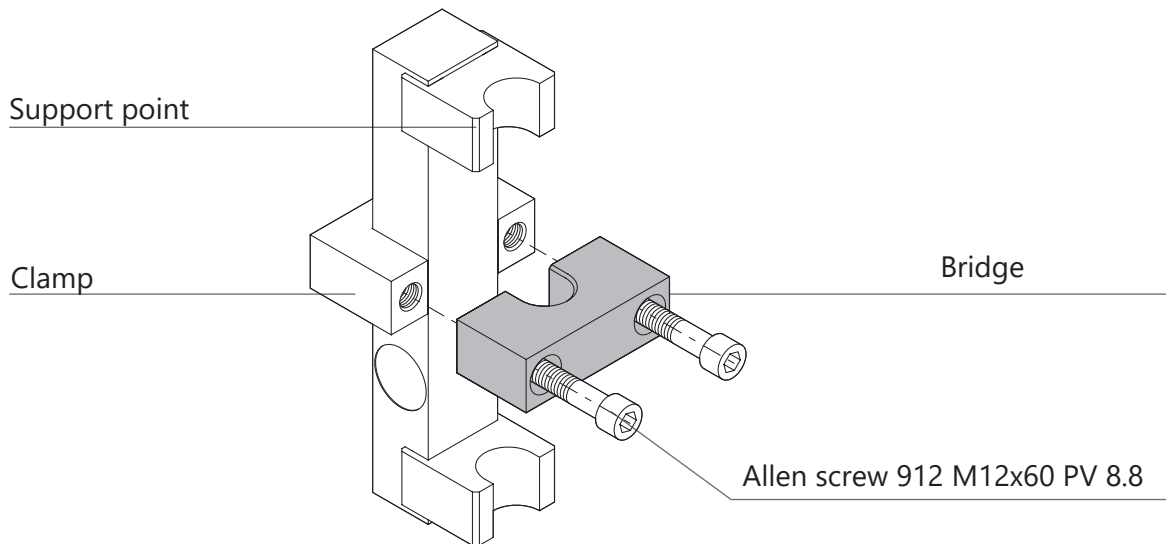
These cells feature an optional cable termination, with either a **five wired cable termination or USB**. Depending on the type of input of the limiting devices.



## 2.2 Key technical characteristics

Technical specifications	LCA2	
Rope diameter (mm)	18 / 19 / 20 / 21 / 22	
Nominal Load	1600kg	3000kg
Workload limit	150 %C.N.	
Workload limit without characteristic loss	200 %C.N.	
Temperature range	-10 ... 60 °C	

## 3.1 Sensor parts



## 3.2 How should the sensor be placed?

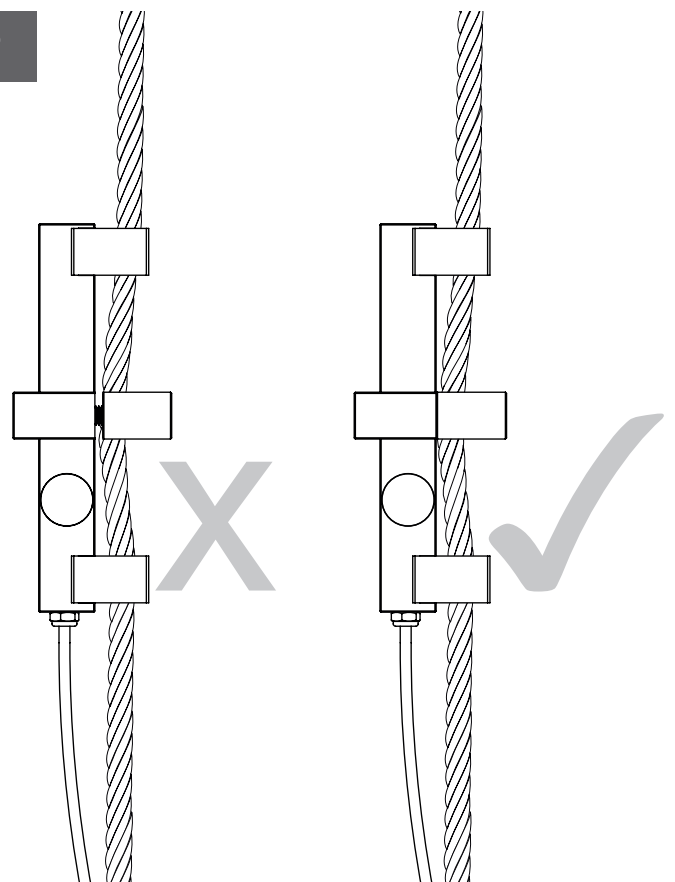
To place the LCA2 cell on the rope, you must place the sensor so that the rope is placed between the sensor support points. Next, place the bridge and tighten the allen screws by turning them clockwise.

## 3.3 How much pressure should be applied?

You will need to screw the screws until the clamp closes and the bridge makes contact with the clamp.

**You will need to apply a tightening screw force=70Nm**

**i** It is possible, depending on the type of rope, that the clamp is not completely closed and the bridge does not make contact with the clamp. In this case, you must place washers to cover the space or replace the clamp for a larger diameter one.



For more information:

---

**[www.elevatormotors.com](http://www.elevatormotors.com)**

**Document Ref.: D1753-02**

**Publication Date: 03/05/2022**

Dinacell Electrónica S.L. reserves the right to add, modify and/or delete content of the document without prior notice. The content indicated here should be used as general product information. It should not be interpreted as a guarantee of quality or durability.



**OFFICIAL USA DISTRIBUTOR OF DINACELL ELECTRÓNICA S.L.**

**ELEVATOR MOTOR CORPORATION. (EMCO)**  
80 Carolyn Boulevard, Farmingdale, NY 11735 USA  
Phone: +1 6312934440  
Fax. +1 6312932714  
info@elevatormotors.com  
**[www.elevatormotors.com](http://www.elevatormotors.com)**