

PFC

User Manual

PFC-300

PFC-500

PFC-1000

PFC-3500



Dinacell Electrónica S.L.

Introduction

1.1 Description



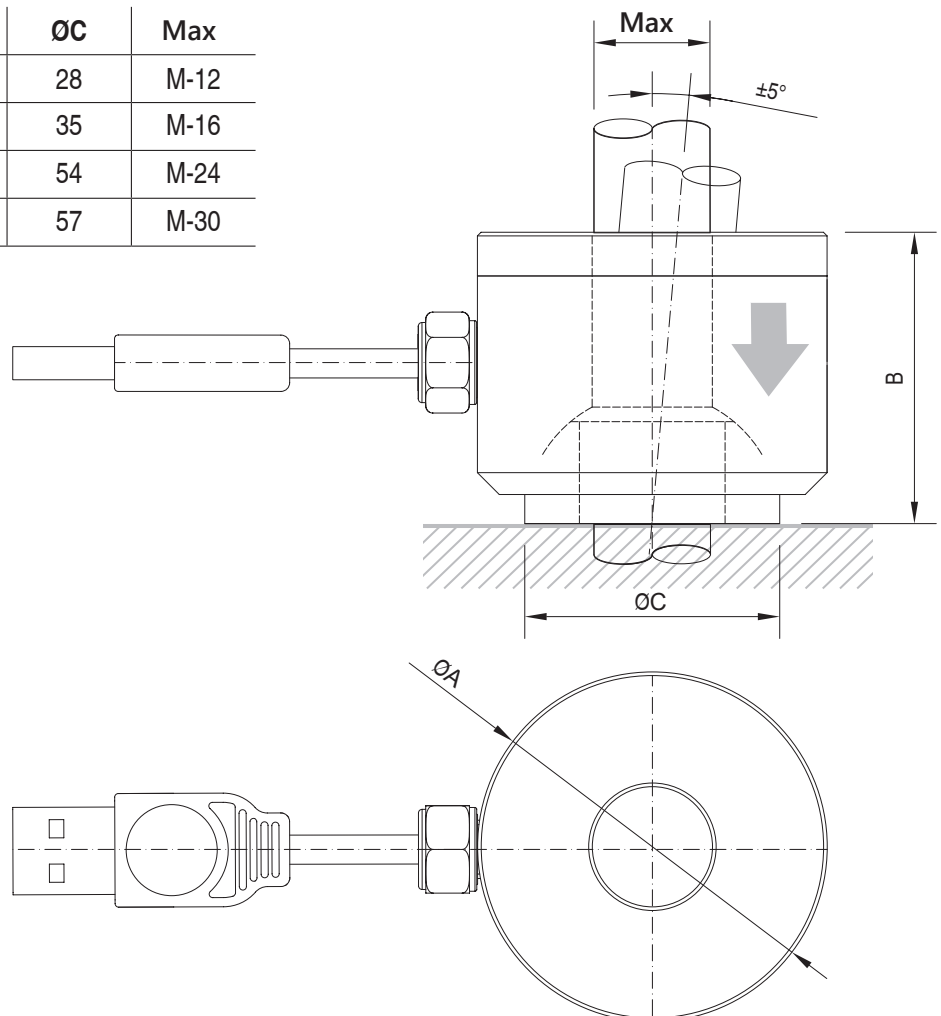
PFC load cells are a weighing solution located at the fixed point of cables in traction elevators. In dinacell we have developed different models of PFC sensors to be able to adapt them to the different types of installations.



PFC sensors are plug & play load cells. This type of load cell is adjusted with a factory CELL value, present on their label. This allows for easy adjustment with our load weighing controls, without the need to insert a known weight into the elevator cabin. For more information refer to the load weighing control manual.

1.2 Dimensions in mm depending on the model

Model.	ØA	B	ØC	Max
PFC-300	40	36	28	M-12
PFC-500	48	40	35	M-16
PFC-1000	65	46	54	M-24
PFC-3500	70	62	57	M-30

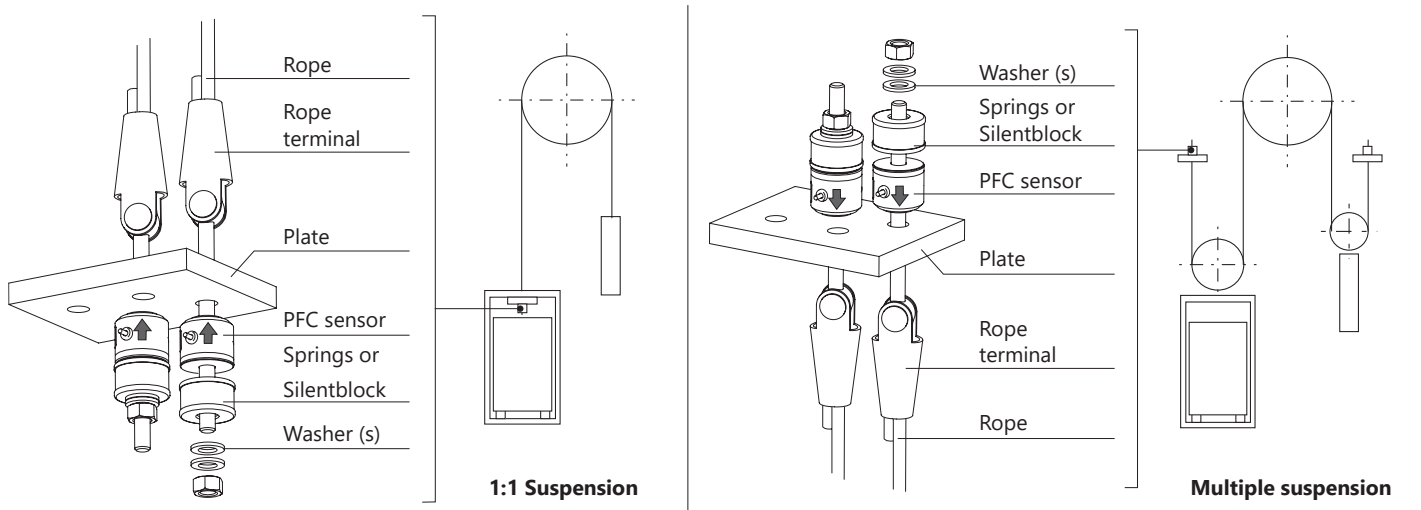


Step by Step installation

2

2.1 Place and way of installation

These load cells must be installed at the fixed point of the elevator. Below you will find an installation scheme for the different types of suspensions.



2.2 Minimum distance between sensor



For installations where the minimum distance is less than dimension A, it is necessary to install SPACERS such as those shown in FIGURE 2.

FIGURE 1
Min. distance between load cells for installation

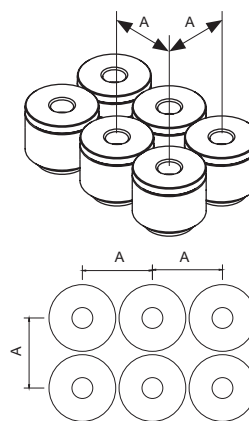
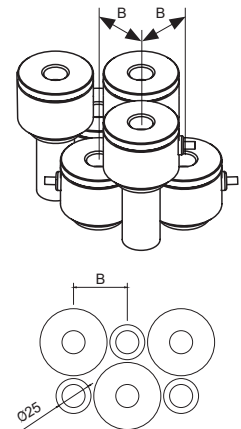


FIGURE 2
Min. distance between load cells for installation with SPACERS



Model.	(A)	(B)	Ref. SPACERS
PFC-300	42	32	021891
PFC-500	50	38.5	021892
PFC-1000	67	51.5	021893
PFC-3500	72	58	021894

Lastly, you must connect the cells USB to the load weighing control. To do this, you must take into account the steps indicated in the load weighing control manual to know when to make the connection.

If you connect multiple PFC sensors to a load weighing control with only one input, you must use an INTERFACE.

Dinacell Electronica S.L.

The information contained by the document is subject to change without notice. The content indicated herein should be used as an overview of the product. It should not be construed as a guarantee of quality or durability. Dinacell Electronic shall not be liable for technical or editing errors or omissions contained in this document.

Document Ref.: D1965-01

Publication date: 03/05/2022



OFFICIAL USA DISTRIBUTOR OF DINACELL ELECTRÓNICA S.L.

ELEVATOR MOTOR CORPORATION. (EMCO)

80 Carolyn Boulevard, Farmingdale, NY 11735 USA

Phone: +1 6312934440

Fax: +1 6312932714

info@elevatormotors.com

www.elevatormotors.com