

Individual sensor for lift ropes application

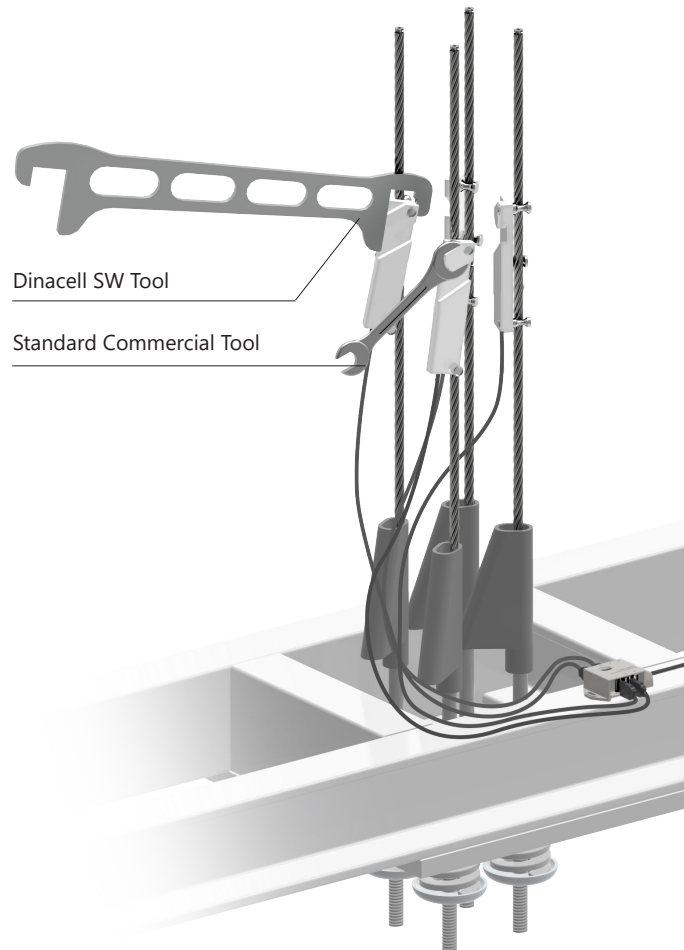


CSA B44.1/ASME A17.5



SWK Load Sensor for lift ropes

These sensors are installed individually on the lift ropes to measure the load supported on each rope. A wide range of SWK covers rope diameter from 4 up to 16 mm, each one with their respective nominal load. One of the most remarkable characteristics of this sensor is the fast and easy installation, by using Dinacell SW Tool or any standard tool. Other of its advantages is the capability of being installed in already finished installations.



For a complete load weighing installation

These sensors have a USB connector output. This feature allows to use multiple-inputs in control unit, as OMEGA Control until, and be able to obtain individual information from each sensor.

For installations with the special requirement of connecting a set of sensors to a load limiter with only one input, sets could be conformed with a (1) INTERFACE. This accessory provides a wired or USB output, which makes them suitable with any device, regardless of the load limiter input type.

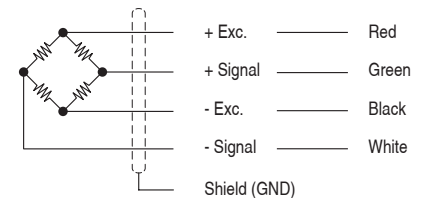
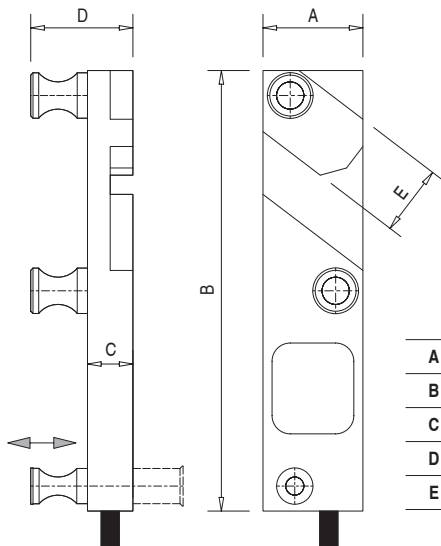


(1) INTERFACE

Specifications

Parameter	Units	Specifications													
		Models	SWK4	SWK5	SWK6	SWK6.5	SWK8	SWK9	SWK10	SWK11	SWK12	SWK13	SWK14	SWK15	SWK16
Nominal Load (N.L.) vs Rope Ø	Ø 4	150	250												
	Ø 5	130	200	300											
	Ø 6		150	250	350										
	Ø 6.5			200	250	400									
	Ø 8				200	350	500								
	Ø 9					250	400	550							
	Ø 10						300	450	650						
	Ø 11							350	550	750					
	Ø 12								450	650	900				
	Ø 13									550	800	1050			
	Ø 14										700	950	1200		
	Ø 15											850	1100	1350	
	Ø 16												1000	1250	
Nominal Sensibility (N.S.)	mV/V	1.3 ... 2.0													
Accuracy	-	0.25%													
Zero balance	mV/V	± 0.20													
Maximum excitation voltage	V	12													
Minimum distance to the socket	cm	25													
Temperature range	Compensated	-10 ... +40 (+14 ... +104)													
	Operating	-20 ... +60 (-4 ... +140)													
	Storage	-20 ... +70 (-4 ... +158)													
Min. Insulation resistance (V.Test s 100V)	GΩ	4													
Input resistance	Ω	350 ... 400													
Output resistance	Ω	350 ±1.5													
Load limit	Safe	120													
	Without characteristics loss	150													
Cable	Type	4 x 0.14mm ² Ø4.3													
	Connector	USB													
	Standard length	2													
	Material	Polyurethane (PU)													
Sensor	Material	Aluminum													
	Surface treatment	Anodized													
Protection class	-	IP65													

Dimensional drawings (mm) and wiring diagram



	SWK4	SWK5	SWK6	SWK6.5	SWK8	SWK9	SWK10	SWK11	SWK12	SWK13	SWK14	SWK15	SWK16	
A	12.5	18	20				22		24		28			
B	70	80	87				97		107		110		130	
C	8	10										12		
D	14	18.5			21		22.5		25		30.5			
E	10	14					15.5		17.5		-			

SWK Product Reference

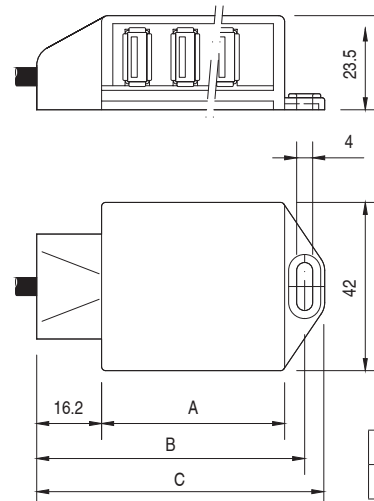


Ref.	SWK4	SWK5	SWK6	SWK6.5	SWK8	SWK9	SWK10	SWK11	SWK12	SWK13	SWK14	SWK15	SWK16
Model	019203	016615	019198	008090	008111	019199	008091	008112	008146	008092	009011	009045	008942

Accessory: INTERFACE



Parameter	Units	Specifications			
Model	-	INTERFACE			
Temp range.	°C (°F)	-20 ... +60 (-4 ... +140)			
Casing material	-	Fireproof plastic ABS			
Protection class	-	IP50			
Cable type	-	4 x 0.22 mm ² Ø4			
Standard length	m	5 + Ferrite			
USB Input	-	6		12	
Cable Output	-	USB	Wiring connection	USB	Wiring connection
Ref.		007555	007274	007554	007275



Dimensions in mm			
USB	A	B	C
6	48	69	74
12	84	105	110

Accessories: Dinacell SW tool



Ref.	002558
------	--------

For more information

www.elevatormotors.com

ELEVATOR MOTOR CORPORATION. (EMCO)
 80 Carolyn Boulevard,
 Farmingdale, NY 11735 USA
 Phone. (+1) 6312934440
 Fax. (+1) 6312932714



Document Ref.: D1737-02
Publication date: 17/03/2022

OFFICIAL USA DISTRIBUTOR OF DINACELL ELECTRÓNICA S.L.

Dinacell Electrónica S.L. reserves the right to add, modify and/or delete content of the document without prior notice. The content indicated here should be used as general product information. It should not be interpreted as a guarantee of quality or durability.