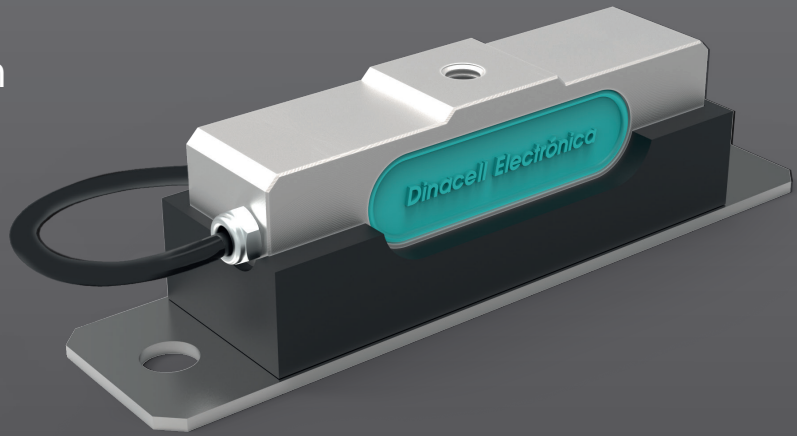


Load sensor designed for under cabin installation

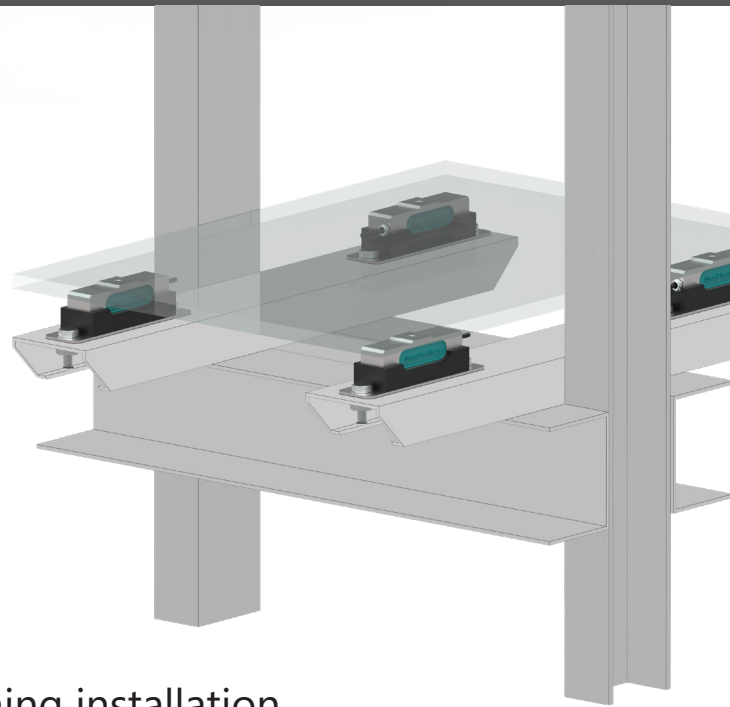


TCA Load compression sensor

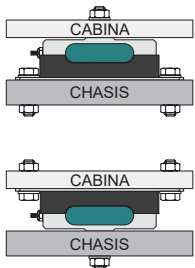
High-accuracy load sensor developed for an optimum installation on the lift chassis.

Once this sensor is connected to a control unit, the adjustment with a known weight is not necessary. The sensor is mounted on top of a silent block with different degrees of hardness in order to avoid the possible transmission of vibrations to the cabin.

It is possible to combine the TCA sensors (active sensors) with dummy TCA sensors (inactive sensors) in order to complement the installation.



For a complete Load weighing installation



TCA sensors are installed under the lift cabin. They are usually installed in sets of 2 or 4 sensors. It is possible to buy this kind of sensors as a set, joined through a (1) CONNECTION BOX with wired or USB output. On the other hand, individual TCA feature USB output as an option. In this case, sensors should be connected to an (2) INTERFACE with wired or USB output as well, depending on the input of the control unit.



(1) CONNECTION BOX

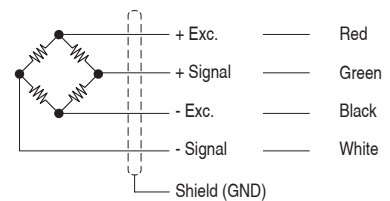
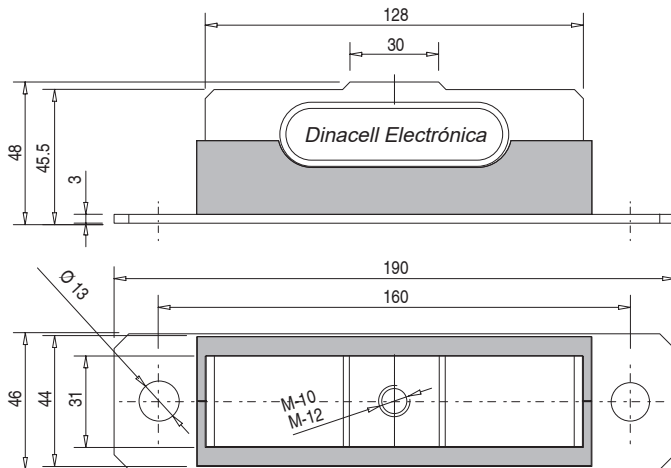


(2) INTERFACE

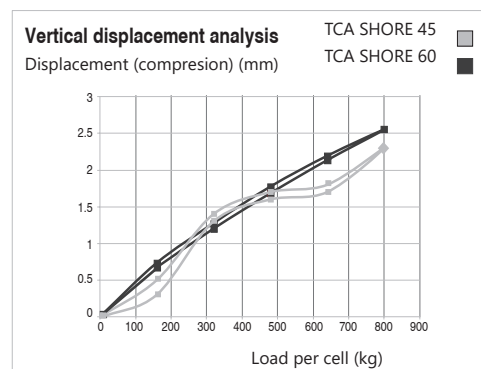
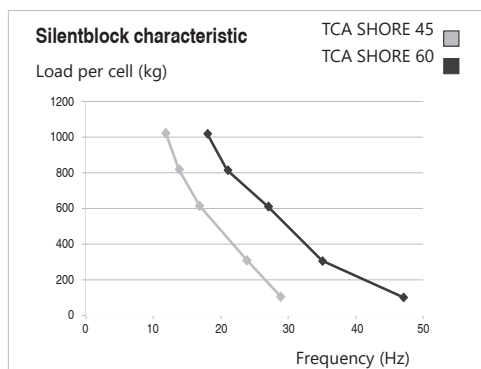
Specifications

Parameter	Units	Specifications	
		TCA-800	TCA-HM
Model	-	TCA-800	TCA-HM
Nominal Load (N.L.)	kg	800	
Nominal Sensibility (N.S.)	mV/V	2 ± 0,1%	
Accuracy	-	± 0,06%	
Zero balance	mV/V	± 0,020%	
Maximum excitation voltage	V	12	
Temperature range	Compensated	-10 ... +40 (+14 ... +104)	
	Operating	-20 ... +65 (-4 ... +150)	
	Storage	-20 ... +70 (-4 ... +158)	
Min. Insulation resistance (V.Test s 100V)	GΩ	4	
Input resistance	Ω	1050 ± 60	
Output resistance	Ω	1000 ± 5	
Load limit	Safe	150	
	Without characteristics loss	180	
Silentblock hardness	SHORE	60	45
Cable	Type	4 x 0.22 mm ² Ø6	
	Connector	Wiring connection / USB	
	Standard length	2 / 5	
	Material	Polyurethane (PU)	
Sensor	Material	Aluminum	
	Surface treatment	Anodized	
Protection class	-	IP66	

Dimensional drawings (mm) and wiring diagram

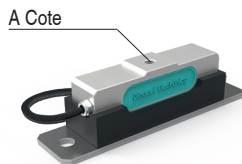


Silentblock characteristic



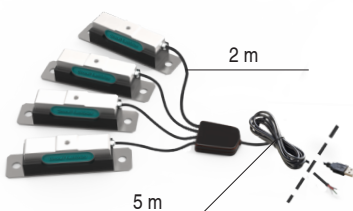
Product Reference

TCA Individual sensor



Ref. TCA-800 SHORE 60	Ref. TCA-HM SHORE 45	A Cote	Standard length (m)	Cable Output
-	-	M-10	2	Wiring connection
008710	019332	M-12		
000665	-	M-10	5	
000256	019331	M-12		
007273	-	M-10	2	USB
007497	018436	M-12		
007893	-	M-10	5	
007974	019330	M-12		

TCA sensor sets + CONNECTION BOX



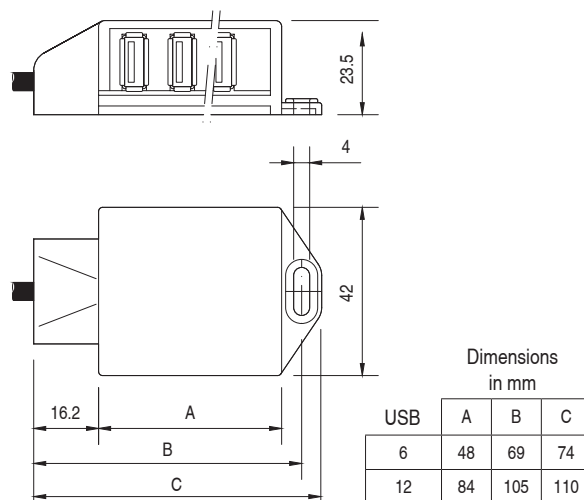
Ref.	Number of TCA	A Cote	Cable CONNECTION BOX	Model
-	2	M-10	Wiring connection	TCA-800
000666	4			
008754	2	M-12		
000257	4			
008645	2	M-10	USB	
007921	4			
007970	2	M-12		
007631	4			

For customizations turn to the sales department.

Accessory: INTERFACE



Parameter	Units	Specifications			
Model	-	INTERFACE			
Temp range.	°C (°F)	-20 ... +60 (-4 ... +140)			
Casing material	-	Fireproof plastic ABS			
Protection class	-	IP50			
Cable type	-	4 x 0.22 mm ² Ø4			
Standard length	m	5 + Ferrite			
USB Input	-	6		12	
Cable Output	-	USB	Wiring connection	USB	Wiring connection
Ref.		007555	007274	007554	007275



For more information

www.elevatormotors.com

ELEVATOR MOTOR CORPORATION. (EMCO)
 80 Carolyn Boulevard,
 Farmingdale, NY 11735 USA
 Phone. (+1) 6312934440
 Fax. (+1) 6312932714

Document Ref: D1743-03
 Publication Date: 17/03/2022



OFFICIAL USA DISTRIBUTOR OF DINACELL ELECTRÓNICA S.L.